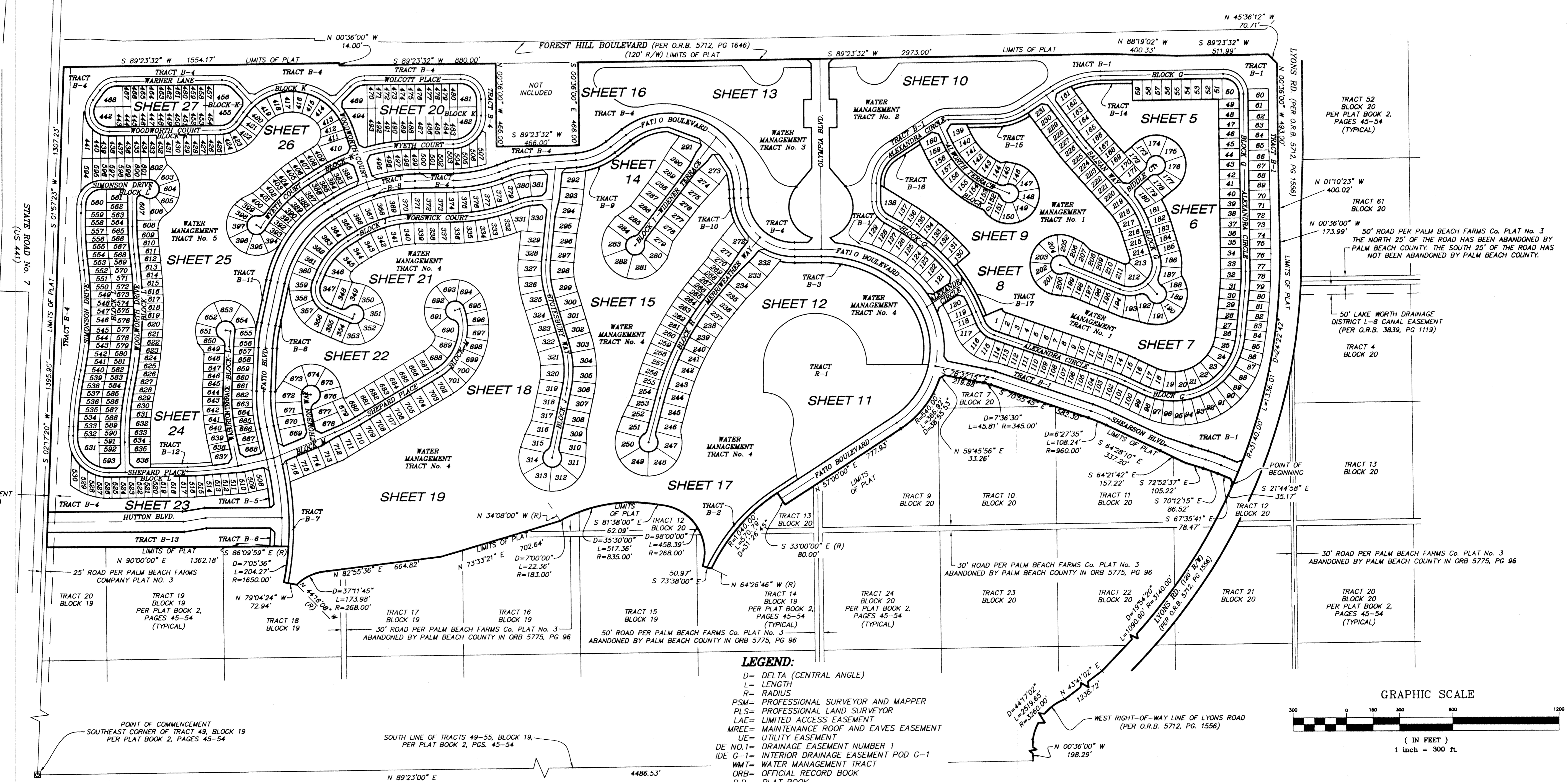
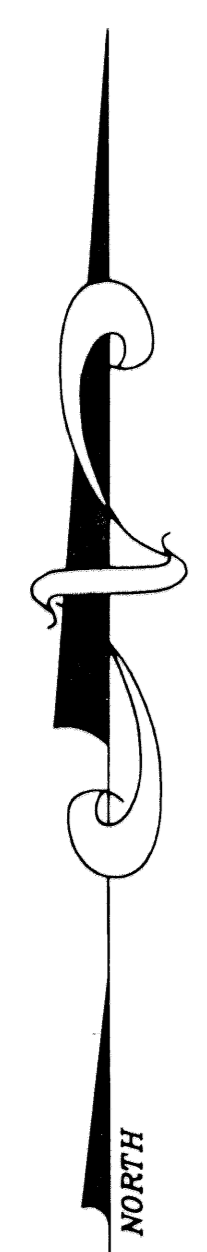
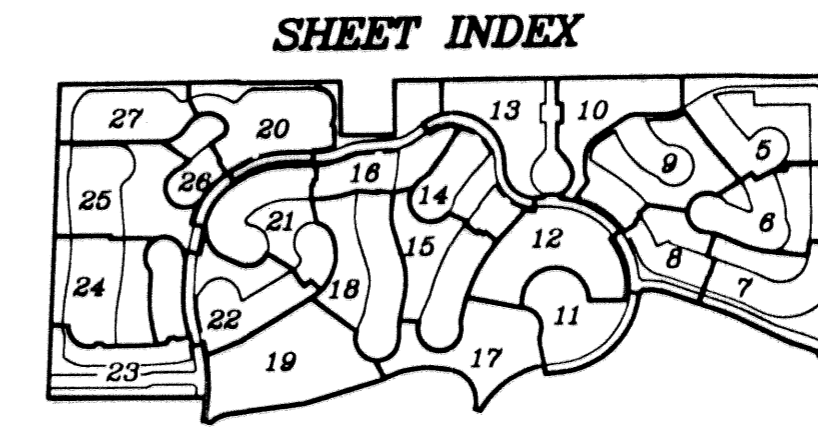
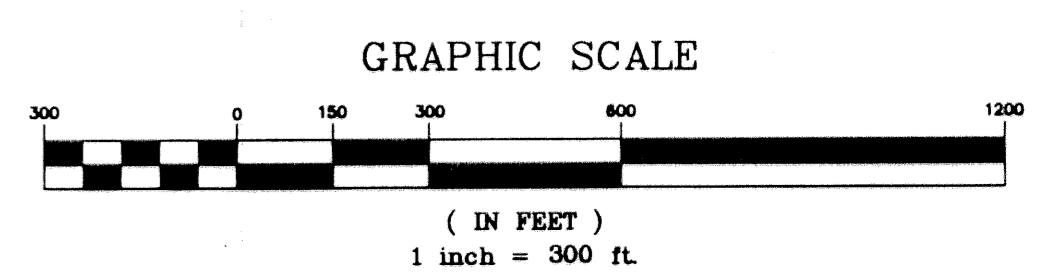


OLYMPIA PHASE I
 BEING A REPLAT OF A PORTION OF BLOCKS 16, 17, 19 AND 20 OF PALM BEACH FARMS
 COMPANY PLAT No. 3, AS RECORDED IN PLAT BOOK 2, PAGES 45 THROUGH 54 OF THE PUBLIC
 RECORDS OF PALM BEACH COUNTY FLORIDA. IN PART OF SECTIONS 7, 8, 17, 18, 19 AND 20,
 TOWNSHIP 44, RANGE 42, VILLAGE OF WELLINGTON, PALM BEACH COUNTY, FLORIDA
 SHEET 4 OF 27
 JANUARY 2002



- LEGEND:**
- D= DELTA (CENTRAL ANGLE)
 - L= LENGTH
 - R= RADIUS
 - PSM= PROFESSIONAL SURVEYOR AND MAPPER
 - PLS= PROFESSIONAL LAND SURVEYOR
 - LAE= LIMITED ACCESS EASEMENT
 - MREE= MAINTENANCE ROOF AND EAVES EASEMENT
 - UE= UTILITY EASEMENT
 - DE NO.1= DRAINAGE EASEMENT NUMBER 1
 - IDE G-1= INTERIOR DRAINAGE EASEMENT POD G-1
 - WMT= WATER MANAGEMENT TRACT
 - ORB= OFFICIAL RECORD BOOK
 - P.B.= PLAT BOOK
 - PG.= PAGE
 - (R)= RADIAL
 - ☐= PERMANENT REFERENCE MONUMENT "LB 4318" (UNLESS OTHERWISE NOTED)
 - = PERMANENT CONTROL POINT "LB 4318"
 - LME= LAKE MAINTENANCE EASEMENT
 - ☒= CENTERLINE
 - LMAE= LAKE MAINTENANCE ACCESS EASEMENT
 - LWDD= LAKE WORTH DRAINAGE DISTRICT
 - CB= CHORD BEARING
 - CD= CHORD DISTANCE



OLYMPIA PHASE I	
	NICK MILLER, INC. Surveying & Mapping Consultants
SHEET NO. 4	SCALE: 1"=300' DATE: JANUARY 2002 JOB NO. 1008.01 FILE: 1008.01
SUITE 105 2560 RCA BLVD. PALM BEACH GARDENS, FLORIDA 33410 TEL 561 627-5200 FAX 561 627-0983 D.B.P.R. LICENSED BUSINESS No. 4318	

40' LWDD E-1 CANAL EASEMENT
(PER ORB 3839, PG 1119)

STATE ROAD No. 7
(US 441)

TRACT 52
BLOCK 20
PER PLAT BOOK 2,
PAGES 45-54
(TYPICAL)

TRACT 61
BLOCK 20

50' ROAD PER PALM BEACH FARMS Co. PLAT No. 3
173.99' OF THE ROAD HAS BEEN ABANDONED BY
PALM BEACH COUNTY. THE SOUTH 25' OF THE ROAD HAS
NOT BEEN ABANDONED BY PALM BEACH COUNTY.

50' LAKE WORTH DRAINAGE
DISTRICT L-B CANAL EASEMENT
(PER O.R.B. 3839, PG 1119)

TRACT 4
BLOCK 20

TRACT 13
BLOCK 20

30' ROAD PER PALM BEACH FARMS Co. PLAT No. 3
ABANDONED BY PALM BEACH COUNTY IN ORB 5775, PG 96

TRACT 24
BLOCK 20
PER PLAT BOOK 2,
PAGES 45-54
(TYPICAL)

TRACT 23
BLOCK 20

TRACT 22
BLOCK 20

TRACT 21
BLOCK 20

TRACT 20
BLOCK 20
PER PLAT BOOK 2,
PAGES 45-54
(TYPICAL)